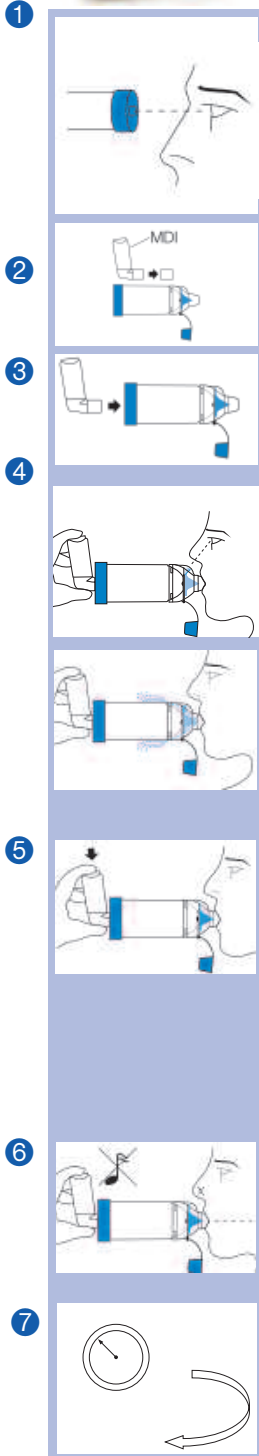


## Directions for Use (Single Patient Use Only)

Product Reorder Number:  
PN 79810 cs/10  
PN 79850 cs/50



### ENGLISH

Prior to use, carefully examine the product for proper assembly, foreign objects and damaged or missing parts. Ensure the mouthpiece assembly is properly secured to the chamber body. Remove any foreign objects prior to use. The product should be replaced IMMEDIATELY if there are any damaged or missing parts. If necessary, use the Metered Dose Inhaler (MDI) alone until a replacement is obtained. If the patient's symptoms worsen, please seek immediate medical attention.

Remove cap from the MDI.  
*Before use, ensure the instructions supplied with the MDI have been read.*

Shake the MDI immediately before each use as per the instructions supplied with MDI. Insert the MDI into the backpiece of the chamber.

Place the mouthpiece comfortably between the lips as shown. Ensure a mouth to mouthpiece seal by watching the movement of the **Flow-Vu™** Inspiratory Flow Indicator.

As the patient inhales through the chamber, the brightly colored Flow Indicator should move towards the patient, providing visual feedback of the inhalation maneuver.

The Flow Indicator will return to the vertical position when the patient stops inhalation or exhales. The exhaled breath exits the chamber as shown in the diagram.

Use the **Flow-Vu™** Flow Indicator to assist in the coordination of the inhalation maneuver.

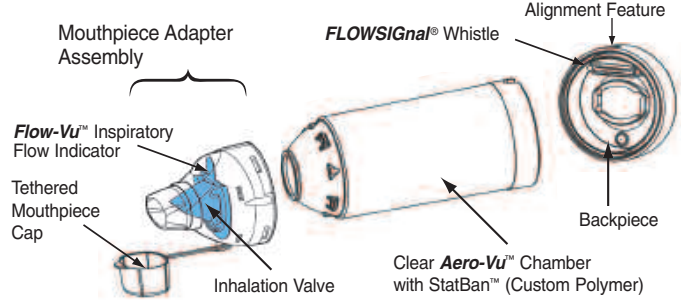
As the patient begins a slow deep inhalation, the Flow Indicator will move towards the patient. This is the correct time to depress the MDI.

A breath hold of up to 10 seconds is recommended to improve the therapeutic effect of the medication.

*Ensure the physician's dosage instructions are followed and that only one puff of medication is delivered at a time.*

Slow down inhalation if you hear the **FLOWSignal®** Whistle sound.

Follow instructions supplied with the MDI regarding the amount of time to wait before repeating instructions 3–6 as prescribed.



## Cleaning Instructions

### ENGLISH

The **AeroChamber MAX®** VHC should be cleaned before first use and then weekly, following the instructions provided below.

1		Remove the backpiece and the mouthpiece adapter assembly as shown.
2		Soak the 3 parts for 15 minutes in a mild solution of liquid dish detergent and lukewarm clean water. Agitate gently.
3		Rinse parts in clean water.
4		Shake out excess water from the 3 parts and allow to air dry as shown.  <i>Ensure parts are dry before reassembly.</i>
5		To reassemble, fit the mouthpiece adapter assembly on the end of the chamber and twist firmly until components securely lock into position.
6		Center the alignment feature on the flexible backpiece with the flow indicator as shown. Press firmly to seat backpiece.

### Cautions

- Read all instructions before use.
- Do not leave **AeroChamber MAX®** VHC unattended with children.
- Do not disassemble the product beyond what is recommended in the cleaning instructions or damage may result.
- If unsure on how to use this product, talk to your physician or pharmacist or Health Care provider.
- The **AeroChamber MAX®** VHC is a medical device. To ensure proper performance it should only be cleaned according to these instructions. It should NOT be cleaned in a dishwasher.

### Notes

- Storage and Operating Range: 40°F - 105°F at 15-95%R.H.
- VHC = Valved Holding Chamber

**Rx Only**

LATEX FREE

# AeroChamber MAX™

Valved Holding Chamber with **Flow-Vu™** Indicator



**monaghan™**

Manufactured by: Monaghan Medical Corporation  
5 Latour Ave., Suite 1600 Plattsburgh, NY 12901  
For additional information visit [www.monaghanmed.com](http://www.monaghanmed.com)

© 2004 Monaghan Medical Corporation  
™ trademarks. Printed in USA. Part Number 79802-01 6/05

Indications for Use: The **AeroChamber MAX®** Valved Holding Chamber ("VHC") is intended to be used by patients who are under the care or treatment of a licensed health care professional or physician. The device is intended to be used by these patients to administer aerosolized medication from most pressurized Metered Dose Inhalers, prescribed by a physician or health care professional. The intended environments for use include the home, hospitals and clinics.